

STRABUC 918



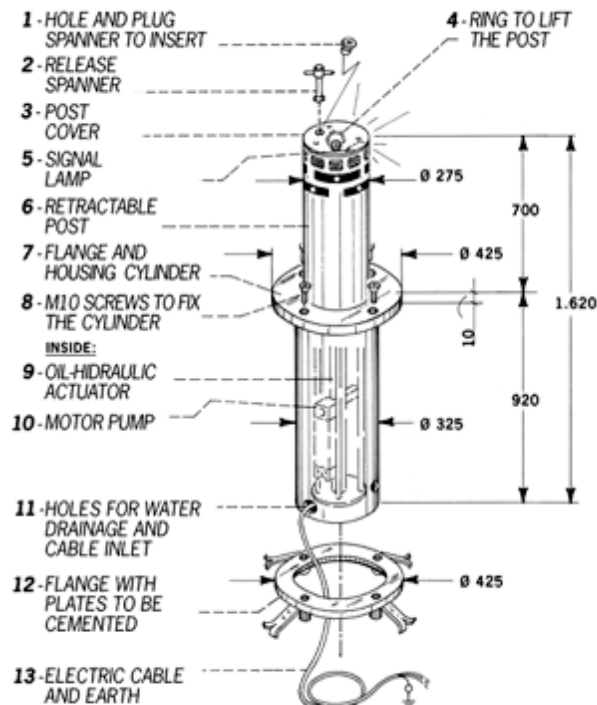
FEATURES AND CHARACTERISTICS



STRABUC 918 is a hydraulically operated post designed to protect premises and for use in traffic control in both private and public areas.



It consists of a flanged cylinder providing a casing to the rising post, an electronic control box



The housing cylinder, to be inserted into a foundation tube cemented slightly deeper than one meter into the ground, is firmly secured to the foundation by an anchor-fitted flange. Suitable openings in the lower and middle sections of the post are provided both to drain possible water residues that may gather inside and to lead cables into the post for the electrical connections. Inside the location cylinder is the rising post which can be activated by a range of control devices, such as radio transmitters or keyswitch through the main control box, to the raised or fully lowered positions to have personal control of a reserved area.

The combination of the colours and the circular design make this automation aesthetically pleasing. A flashing light can be fitted as a warning signal while the post is operated.

The movements of the post, allowed by the compact assembly of the motor-pump-valve block with the hydraulic actuator by means of copper pipes and by a combination of vertical guide rods, are so maintained even and smooth along the entire working cycle.

In events like power failure it is possible to override the hydraulic mechanism from the top of the post by means a specially designed spanner which is supplied with the system, and the post can be manually lowered into the housing cylinder.

SPECIFICATION

StracBuc 918

Hydraulic Motor Pump

Hydraulic Pump	P 10.
Pump Flow Rate	2,75 l/min
Mean Working Pressure	2 MPa (20 bars)
Max. Pressure	4 MPa (40 bars)
Working Temperature	-20°C +80°C
Oil Type	OIL A15 by AGIP
Static Weight	10 Kg
Protection Standards	IP 54

Oil-Hydraulic Actuator

Travel Time	6 s
Stroke	740 mm
Shaft Diameter	16 mm
Piston Diameter	30 mm
Thrust power. Raise	276 Kg
Thrust power. Lower	147 Kg
Assembly weight STRABUC 918	128 Kg
Full protection standards	IP 557
Lamp power supply	230 V - 25 W

Electric Motor

Power output	0,25 KW (0,33 HP)
Supply voltage	230 V
Frequency	50 Hz
Absorbed current	1,8 A
Absorbed power	370 W
Capacitor	12,5 µF
Motor rotation speed	2800 r.p.m.
Intermittent service	S3
Duty cycle:	6sec. Raising - 30 sec. Stop - 6 sec. Lowering
Time of one complete cycle	42 s
No. of Cycles (Rising-Stop-Lowering) per hour:	85 h
No. of Cycles a year, 8 hours' service a day	250.000 (approx)