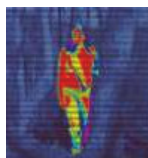


PIR-2S



The PIR-2S Passive Infrared Detector is specially designed for providing space protection in a wireless security system. It detects the movement of human body heat within its effective coverage; thus when an intruder crosses or enters the area, the resulting change in infrared energy from the intruder will be detected and an alarm signal will transmit to the Base Unit.

CHARACTERISTICS



Detects movement of human body heat

FEATURES

	PIR-2S
Supervision	Sends heartbeat signal at 60-minute interval. When Tamper or Low Battery condition is detected, it reports automatically.
Cover Area	Coverage Angle: 110 degrees. Effective Distance: Max. 12m @ambient temp. 25 degrees.
Detector Sensitivity	Detector Type: Dual element. Pulse Count: 2 or 4 pulses selectable.
Power	Two AAA alkaline batteries. Current: 18uA @standby, 20mA @activation. Estimated Battery Life: 2 years (@actuated 40 times/day)
Dimensions	Size: 70.5 x120 x 45 mm Weight (w/o battery): About 85g