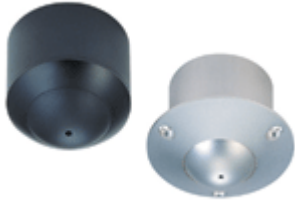
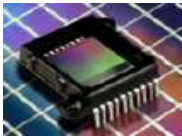


KPC-S801DC



World's Smallest Vandal Proof Dome Camera built in aluminum structure that produces extraordinary high quality picture with 1/3" Sony Super HAD CCD Sensor.

FEATURES AND CHARACTERISTICS



Built with 1/3" Sony Super HAD CCD sensor with resolution of more than 380TVL.



Built in Aluminum Structure for long lasting durability.



Low light sensitivity of 1.0Lux/F2.0.

SPECIFICATION

SPECIFICATION	
	KPC-S801DCS
Image Device	1/3" Sony Super HAD CCD
Scanning System	2:1 Interlace
Scanning Frequency	PAL – H: 15.635Khz, V: 50Hz
Total Pixels	537(H) x 597(V) – PAL
Effective Pixels	500(H) x 582(V) - PAL
Horizontal Resolution	More than 380 TVL
Electronic Shutter	1/50 ~ 1/100,000 (SEC) – Automatic
S/N Ratio	More than 45dB (AGC Off)
White Balance	Automatic (2100°K ~ 8000°K)
Sensitivity	1.0Lux / F2.0
Sync System	Internal
Gamma Correction	0.45
Video Output	1[Vp-p] Composite 75Ω, Unbalanced
Input Power Source	12V ± 10% DC
Power Consumption	180mA or less
Operating Temperature	-10°C ~ +45°C
Dimensions	46.5mm Diameter
Board Lens	F3.7mm Super Cone Pinhole