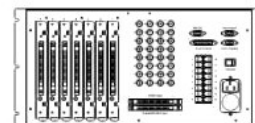
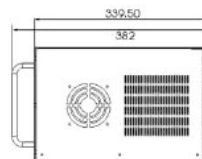
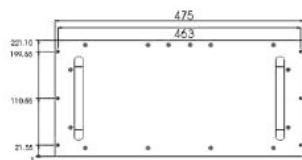


MT081 / MT161 / MT321



FEATURES AND CHARACTERISTICS

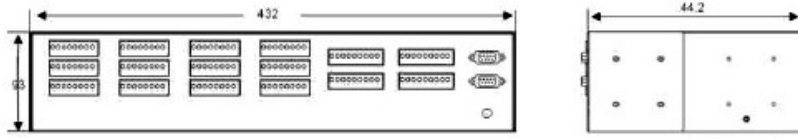
- 8/16/32 Monitor Out (Optional)
- Video Input Expansion of up to Maximum of 256 Video Inputs
- RS485 Port x 16 for Command Control
- Control Keyboard x 8, Multi User Control
- PTZ Dome Control (up to 256), Multiplexer Control (up to 16), DVR Control (up to 16)
- Multi Protocol Setup by Matrix Driver
- Alarm In / Relay: Minimum x 32, Maximum x 256
- Camera Title Set, Relay / Alarm Title (English & Numeric)
- Expansion Card Hot Insert and Pull Out
- RS-485 Interface for Device Link for Multiplexer, DVR and PTZ Device

SPECIFICATION

| | MT081 | MT161 | MT321 |
|--------------------------|---|-------|-------|
| Monitor Output | 8 | 16 | 32 |
| Memory | Mercury Battery provides data retention for ten years | | |
| Keyboard Capacity | 8 | | |
| Receiver / Dome Control | RS-485 (Pelco-D, Pelco-P, Lilin) | | |
| Alarm Input | Min. x 32, Max. x 256 (optional) | | |
| Relay Output Rating | Min. x 32, Max. x 256 (optional) | | |
| Relay Mode | Relay Arrangement, Monitor Display, Preset Display, DVR Record | | |
| Title Display | Monitor Number, Video Title, Alarm Title, Relay Title, Time-Date | | |
| Data (Computer) | RS-232/19.2K Baud | | |
| Keyboard Port | 8 | | |
| Electrical | | | |
| Power Source | AC110/220V 3A / 6A | | |
| Power Consumption | 100 Watts | | |
| Operating Temperature | -10 °C ~ 75 ° | | |
| Weight | 8.8kg | | |
| Matrix Dimension | 475(W) x 382(L) x 221(H)mm | | |
| Expansion Card Dimension | 432(W) x 44.2(L) x 93(H)mm | | |
| Video Input | Min. 32 channels, expandable to Max. 256 channels – BNC Connector Standard 1U, each contains 32 signals (Input either directly from camera or from multiplexer looping) | | |
| Expand Video Input | Standard 1U, each contains 16 video sources from multiplexer/ DVR monitor out | | |
| Video System | NTSC / PAL | | |
| Switching Type | Cross-point video matrix NTSC, PAL compatible | | |
| Switching Time | Less than 100ns (typical) | | |
| Bandwidth | -3dB Bandwidth 60MHz | | |
| Cross Talk | -83dB at 20KHz (typical) | | |
| DC Output | Zero volts | | |
| Monitor | OSD Setup | | |
| Character Type | White with black line | | |
| Camera Identification | One line, 10 characters plus camera number | | |
| Date/Time | On Screen | | |
| Programmable | On-Screen, Menu driver | | |
| Character Set | 80 ASCII characters | | |
| Interface | | | |
| RS232 | For system data transfer set up | | |
| RS485 | For device control link | | |

Additional Matrix Alarm Box

MA032

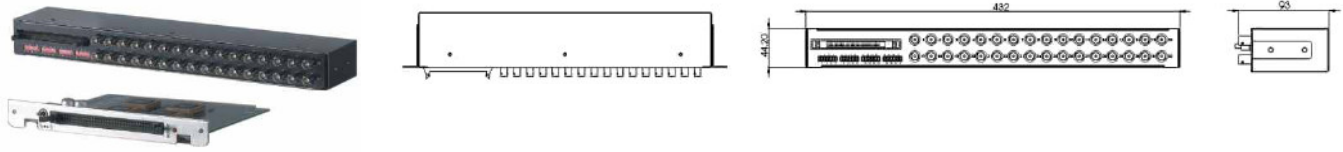


SPECIFICATION

| SPECIFICATION | |
|----------------------|--|
| | MA032 |
| Alarm Input / Output | 32 individually programmable for rear dry contact (Expands up to 8 x MA032, total 256) |
| Relay | 32 dry contact rated at 0.5Amp @125VAC, 1Amp @ 30VDC, 60ohm contact resistance (expands up to 8 maximum, total 256) |
| Power Source | 12VDC @ 1.5A |
| Power Consumption | 10 Watts |
| Indicator | One power LED, RED |
| Dimension | 432(W) x 44.2(L) x 93(H)mm |
| Weight | N.W.: 3KG |
| | |

Additional Matrix Video Expansion Card

MV008 / MV016 / MV032



SPECIFICATION

| | MV008 | MV016 | MV032 |
|--------------|----------------------------|------------------------------|--------------|
| Video Input | | 32 on video input rear panel | 12VDC @ 1.5A |
| Video Output | 8 | 16 | 32 |
| Dimension | 432(W) x 44.2(L) x 93(H)mm | | |
| Weight | N.W.: 1.7KG / G.W.: 2.2KG | | |
| | | | |